


How to start the eGalaxHidDaemon.exe automatically

Date: 2018/09/05

This document describes how to start the eGalaxHidDaemon.exe automatically on the MacOS. The following steps show you how to add a start item in your account. After doing the settings, the eGalaxHidDaemon.exe can be executed automatically when you log in or system boot.

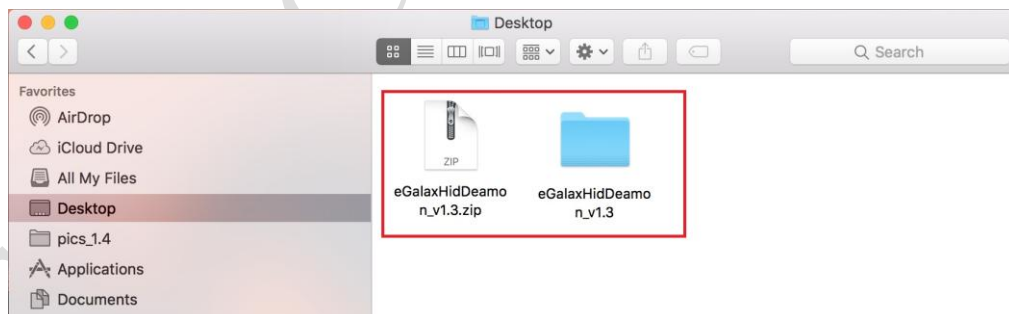
Step 1: Download the eGalaxHidDaemon_v1.x.zip from the EETI website.

http://www.eeti.com/drivers_Mac.html

Mac OS X 10.11 El Capitan Mac OS 10.12 Sierra		
<ul style="list-style-type: none">This tool is for mode switch of the controller board for Mac HID driver. The calibration tool of resistive controller board will be released with new driver.	 eGalaxHidDaemon_v1.0	2016/10/17

Note: this is a sample snapshot and the link will be updated.

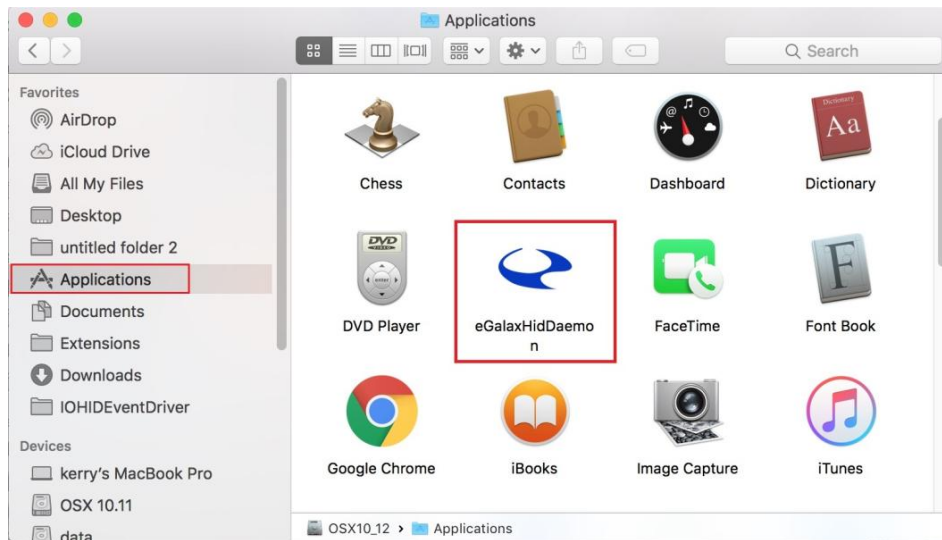
Step 2: Double-Click to decompress the eGalaxHidDaemon_v1.x.zip file in your MacOS. You can get a folder named eGalaxHidDaemon_v1.x.



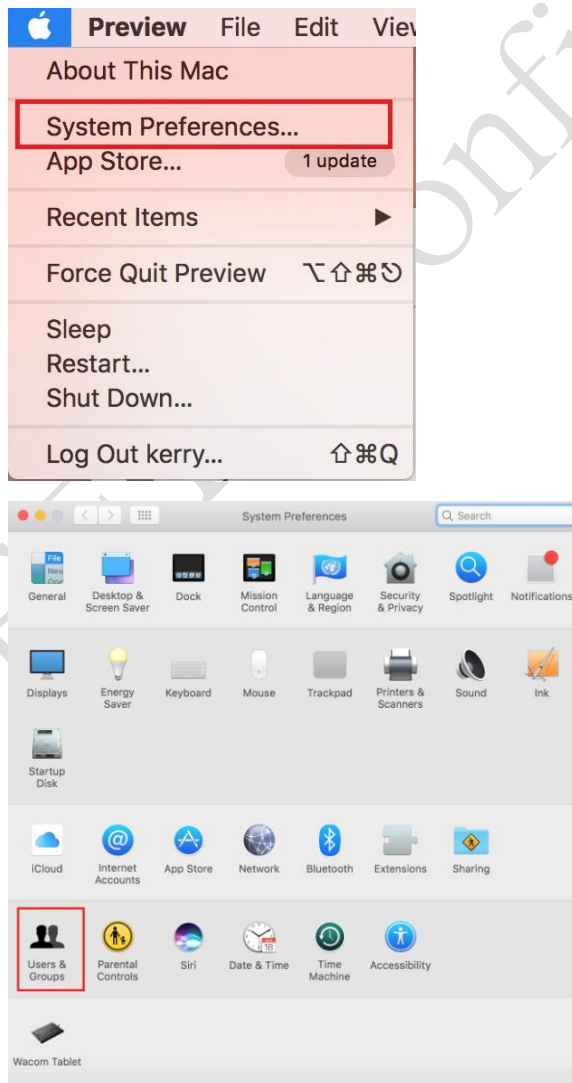
Step 3: Select the eGalaxHidDaemon.exe file which matches your OS version.



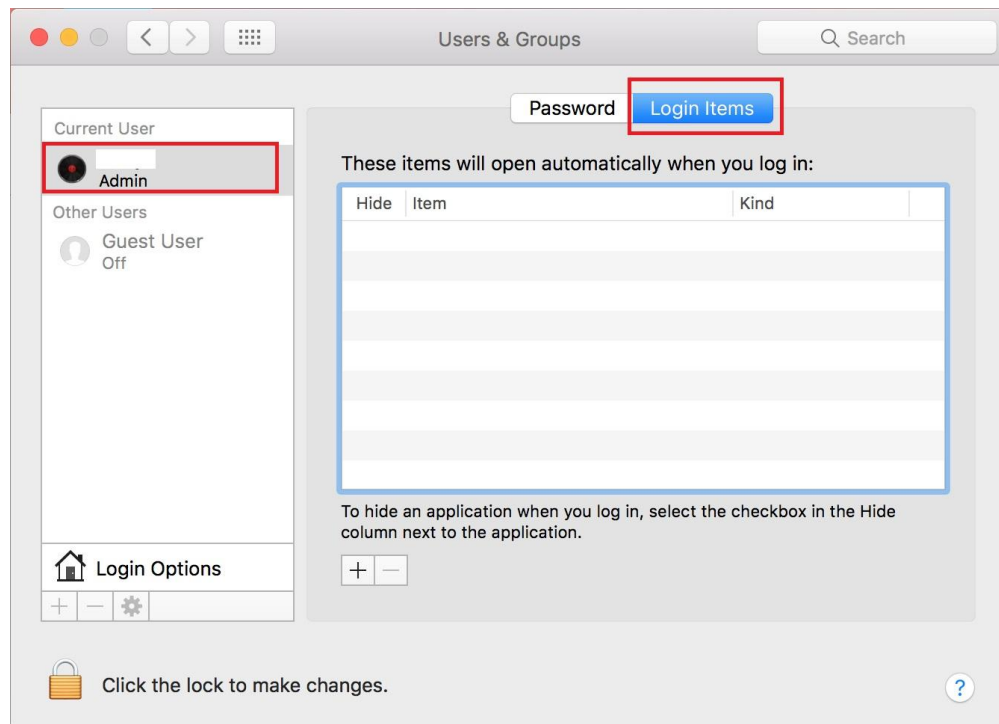
Step 4: Copy and Paste eGalaxHidDaemon.exe file to [Applications](#) folder.



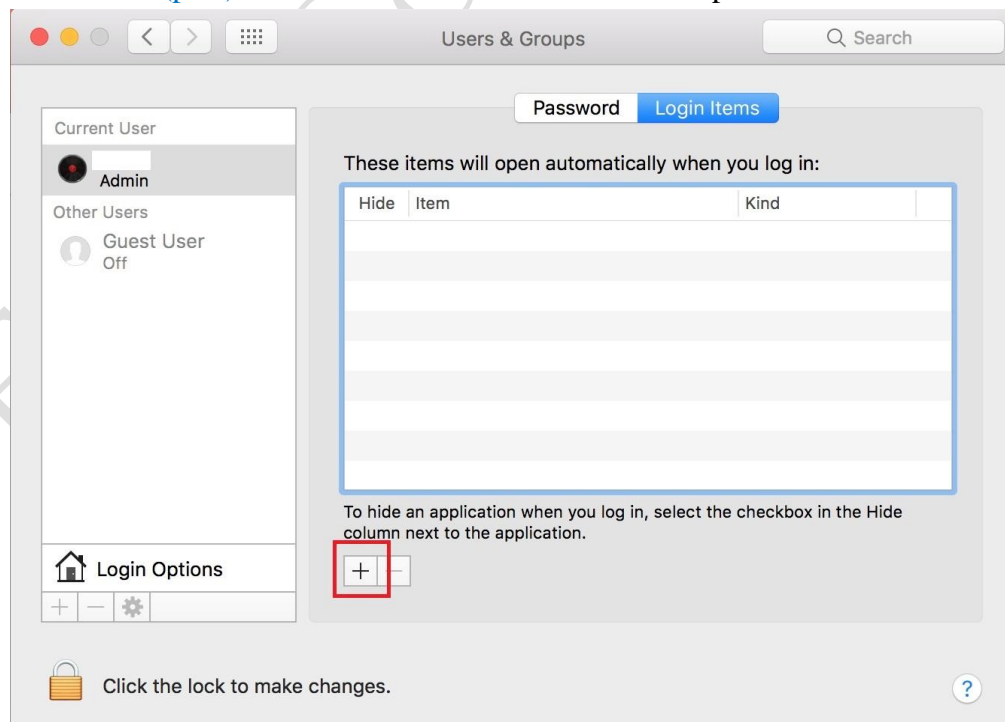
Step 5: Click the [System Preferences](#) item from the Apple menu and select [Users & Groups](#)



Step 7: Click a username which you are using and select the [Login Items](#) tab.

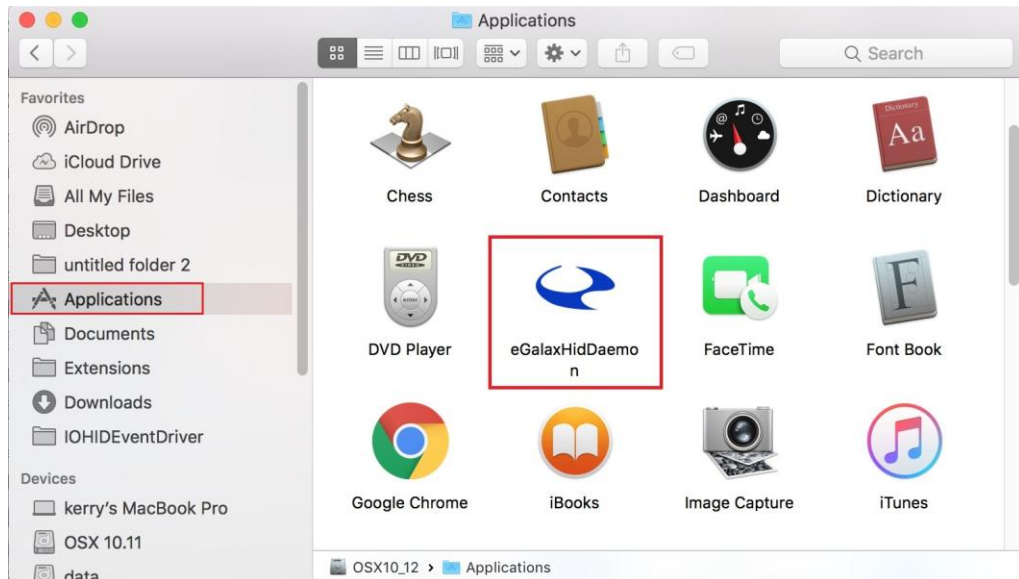


Step 8: Click the + (plus) button and the Finder window will open.

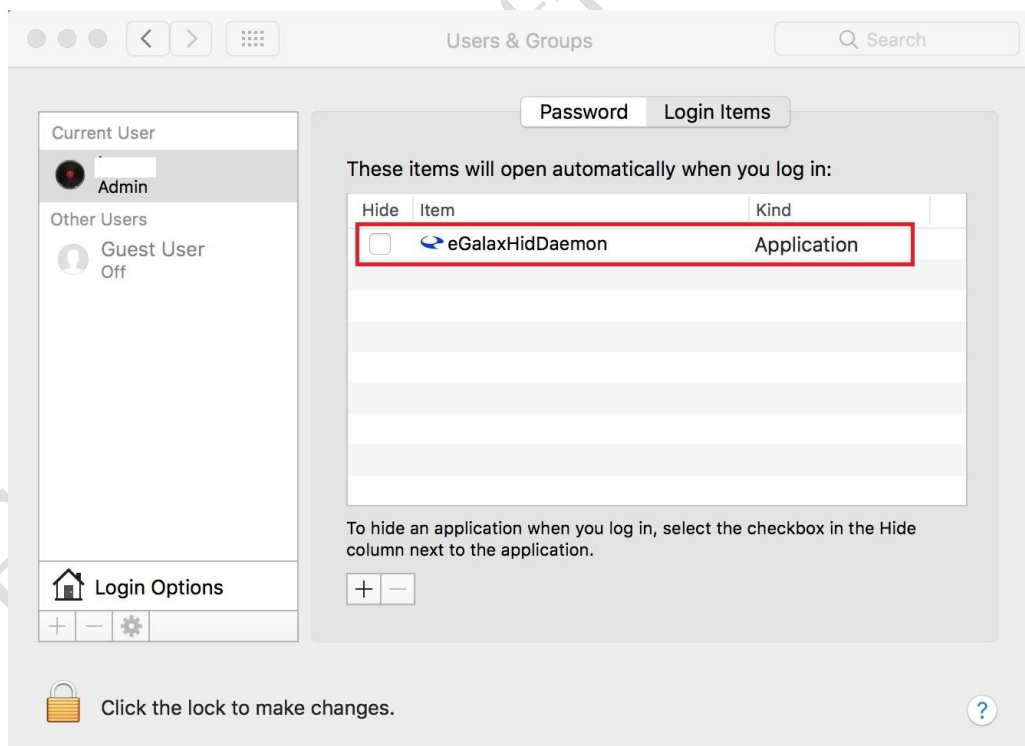


Step 9: Select the eGalaxHidDaemon.exe in **Applications** folder.

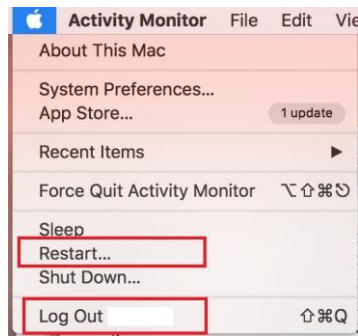
The application can be executed automatically after you log in.



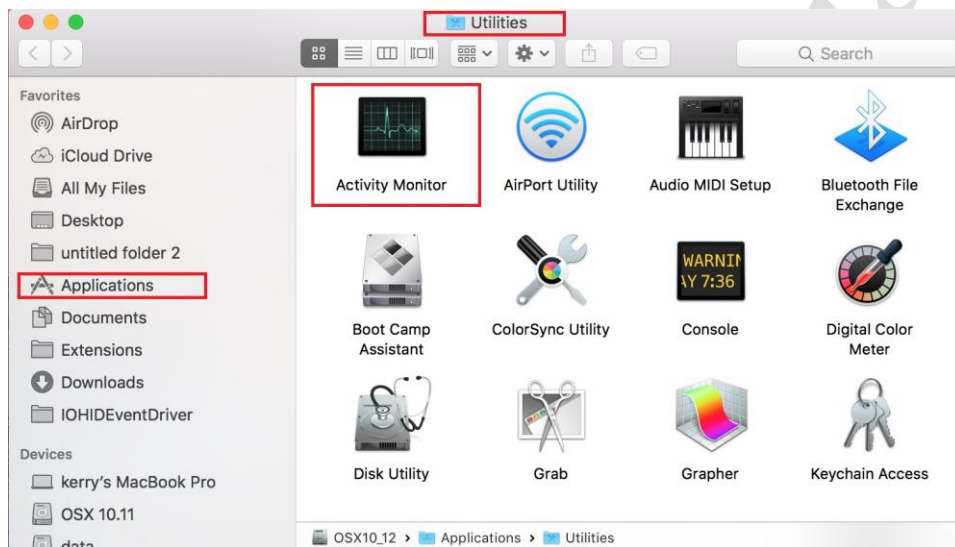
Step 10: The new item **eGalaxHidDaemon** has been added.



Step 11: Reboot the MacOS or re-login your account.



Step 12: After restarting or re-login, please execute the [Activity Monitor](#) in the Applications\Utilities.



Step 13: Check the *eGalaxHidDeamon.exe* in the executing Process.

